

AGENDA

Meeting: South West Wiltshire Area Board
Place: Nadder Centre, Weaveland Road, Tisbury, SP3 6H
Date: Wednesday 29 January 2020
Time: 6.30 pm

Including the Parishes of Alvediston, Ansty, Barford St. Martin, Berwick St John, Berwick St Leonard, Bishopstone, Bowerchalke, Broad Chalke, Burcombe Without, Chicklade, Chilmark, Compton Chamberlayne, Dinton, Donhead St Andrew, Donhead St Mary, East Knoyle, Ebbesbourne Wake, Fonthill Bishop, Fonthill Gifford, Fovant, Hindon, Kilmington, Mere, Netherhampton, Quidhampton, Sedgehill and Semley, South Newton, Stourton with Gasper, Stratford Toney, Sutton Mandeville, Swallowcliffe, Teffont, Tisbury, Tollard Royal, West Knoyle, West Tisbury, Wilton and Zeals.

The Area Board welcomes and invites contributions from members of the public. The chairman will try to ensure that everyone who wishes to speak will have the opportunity to do so.

If you have any requirements that would make your attendance at the meeting easier, please contact your Democratic Services Officer.

Refreshments and networking opportunity from 6:00pm



Please direct any enquiries on this Agenda to Lisa Moore (Democratic Services Officer), direct line 01722 434560 or email lisa.moore@wiltshire.gov.uk

All the papers connected with this meeting are available on the Council's website at www.wiltshire.gov.uk

Press enquiries to Communications on direct lines (01225) 713114 / 713115.

Wiltshire Councillors

Cllr Jose Green, Fovant and Chalke Valley (Chairman)
Cllr Pauline Church, Wilton and Lower Wylde Valley
Cllr George Jeans, Mere
Cllr Tony Deane, Tisbury (Vice-Chairman)
Cllr Bridget Wayman, Nadder and East Knoyle

Recording and Broadcasting Information

Wiltshire Council may record this meeting for live and/or subsequent broadcast on the Council's website at <http://www.wiltshire.public-i.tv>. At the start of the meeting, the Chairman will confirm if all or part of the meeting is being recorded. The images and sound recordings may also be used for training purposes within the Council.

By entering the meeting room you are consenting to being recorded and to the use of those images and recordings for broadcasting and/or training purposes.

The meeting may also be recorded by the press or members of the public.

Any person or organisation choosing to film, record or broadcast any meeting of the Council, its Cabinet or committees is responsible for any claims or other liability resulting from them so doing and by choosing to film, record or broadcast proceedings they accept that they are required to indemnify the Council, its members and officers in relation to any such claims or liabilities.

Details of the Council's Guidance on the Recording and Webcasting of Meetings is available on request. Our privacy policy can be found. [here](#).

Public Participation

Please see the agenda list on following pages for details of deadlines for submission of questions and statements for this meeting.

For extended details on meeting procedure, submission and scope of questions and other matters, please consult [Part 4 of the council's constitution](#).

The full constitution can be found at [this link](#).

For assistance on these and other matters please contact the officer named above for details

	Time
<p>1 Welcome and Introductions</p>	6.30pm
<p>2 Apologies for Absence</p>	
<p>3 Declarations of Interest</p> <p>To receive any declarations of disclosable interests or dispensations granted by the Standards Committee.</p>	
<p>4 Minutes (<i>Pages 1 - 26</i>)</p> <p>To confirm as a correct record and sign the minutes of the previous meeting held on Wednesday 20th November 2019.</p> <p>To note any matters arising from the minutes of the last meeting.</p>	
<p>5 Chairman's Announcements</p>	
<p>6 Partner and Community Updates (<i>Pages 27 - 62</i>)</p> <p>To receive any verbal updates from Partners and Community Groups present, including:</p> <ul style="list-style-type: none"> • Police – Neighbourhood Teams • Fire & Rescue • Community Engagement Manager • Youth - LYN <p>To note the following written updates attached to the agenda:</p> <ol style="list-style-type: none"> a) Police – Wilton Update attached, West Wiltshire Team Update online b) Dorset & Wiltshire Fire & Rescue c) Wiltshire Council Items for Information d) Clinical Commissioning Group e) Healthwatch Wiltshire f) Community Safety Group g) Local Youth Network <p><i>Note: Speakers are reminded that they each have a 3 minutes slot, unless they have previously discussed alternative arrangements with the Community Engagement Manager.</i></p>	6.40pm

7 **Main Theme - Young People's Mental Health**

7.00pm

- Introduction to this item by Heather Newton, Member for Youth Parliament
- Information on iThrive, the CAMHs service, other commissioned services and activities, and local data on the need in this area, by Judy Edwards, Wiltshire Council - Commissioner for Young Peoples Mental Health Services
- Youth Panel & Q&A Session

8 **Area Board Funding** (Pages 63 - 68)

7.50pm

To consider bids to the Area Board funding schemes:

Remaining budgets for 2019/20:

- Community Area Grants - £7,900 remaining
- Health & Wellbeing - £280 remaining
- Youth Budget - £6,400 remaining

Community Area Grants

The Board members will consider 5 applications for funding from the Community Area Grants Scheme.

Applicant	Amount requested
Applicant: Ebbesbourne Wake Parish Council Project Title: Replace Fingerpost View full application	£400.00
Applicant: Barford St Martin Village Defibrillator Fundraising Activities Group Project Title: Barford St Martin Defibrillator Fundraising View full application	£1464.20
Applicant: Able Hands Together CIC Project Title: Able Hands Together CIC View full application	£5000.00
Applicant: East Knoyle Village Hall Project Title: East Knoyle village hall - Upgrade of Toilet facilities including new Disabled toilet.	£5000.00

View full application	
Applicant: Teffont Parish Council Project Title: Village Finger Post Restoration View full application	£145.00

Youth Funding

To consider one bid for a top up of £172 for the Monday night Youth Sessions at the Nadder Centre – Seeds4Success.

Area Board Project – Cllr Tony Deane

Real Madrid – Football Coaching – Proposal to allocate up to £4,000 to this project.

Note: Report to be circulated at the meeting.

9 **Close**

The next meeting of the Board is on Wednesday 18th March 2010, 6.30pm at Nadder Centre, Tisbury.

8.30pm

MINUTES

Meeting: SOUTH WEST WILTSHIRE AREA BOARD
Place: Nadder Centre, Weaveland Road, Tisbury, SP3 6H
Date: 20 November 2019
Start Time: 6.30 pm
Finish Time: 9.10pm

Please direct any enquiries on these minutes to:

Lisa Moore (Democratic Services Officer), Tel: 01722 434560 or (e-mail) lisa.moore@wiltshire.gov.uk

Papers available on the Council's website at www.wiltshire.gov.uk

In Attendance:

Wiltshire Councillors

Cllr Jose Green (Chairman), Cllr Tony Deane (Vice-Chairman) and
Cllr Bridget Wayman

Wiltshire Council Officers

Lisa Moore, Democratic Services Officer
Karen Linaker, Community Engagement Manager
Jessica Gibbons, Director for Communities and Neighbourhood Services

Town and Parish Councillors

Bishopstone Parish Council – M Ash
Bower Chalke Parish Council – J Body
Compton Chamberlayne Parish Council – A Winchester & D Winchester
Fovant Parish Council – A Mallalieu
Hindon Parish Council – D Robertson
Quidhampton Parish Council – C Churchill
Swallowcliffe Parish Council – S Banas
West Tisbury Parish Council – A Lacey

Partners

Wiltshire Police - Inspector Pete Sparrow & Richard Salter

Total in attendance: 60

<u>Agenda Item No.</u>	<u>Summary of Issues Discussed and Decision</u>
66	<p><u>Welcome and Introductions</u></p> <p>The Chairman, Councillor Jose Green welcomed everyone to the meeting of the South West Wiltshire Area Board and introduced Jessica Gibbons, the newly appointed Director for Communities and Neighbourhood.</p>
67	<p><u>Apologies for Absence</u></p> <p>Apologies for absence were received from:</p> <ul style="list-style-type: none"> • Cllr Paulin Church • Cllr George Jeans • Sandra Harry - Tisbury PC • Clive Hazzard & Lindsey Wood – Mere TC
68	<p><u>Declarations of Interest</u></p> <p>In relation to item 11 – Area Board Funding - Tisbury Community Benefit Society, Cllr Wayman noted that her sons partner ran a refill shop in Shaftesbury. As this was not a pecuniary interest, Cllr Wayman took part in the discussion and vote on this application.</p>
69	<p><u>Minutes</u></p> <p>Decision</p> <p>The minutes of the previous meeting held on Wednesday 18 September 2019, were agreed as a correct record and signed by the Chairman.</p>
70	<p><u>Chairman's Announcements</u></p> <p>The Chairman made the following announcements:</p> <ul style="list-style-type: none"> • Felicity Corp was thanked for her loyal support in Tisbury and the wider area, especially to the library services. • <u>Real Madrid</u> – The Board would be initiating a sponsorship style initiative for young football players across South West Wiltshire, with the aim of providing financial assistance to individuals to enable them to take part in the Real Madrid football coaching sessions in August 2020. It hoped the initiative would be supported by the parish councils. Further details would

	<p>be circulated in January. A copy of the flyer circulated at the meeting is attached to these minutes.</p> <ul style="list-style-type: none"> • <u>Funding</u> – As the Boards funding pots were dwindling rapidly, attention was drawn to other sources of additional funding available to applicants. These were the Cranbourne chase AONB, which offered grants for Village Halls and the Rural Services Network. Contact https://www.rsnonline.org.uk/
71	<p><u>Partner and Community Updates</u></p> <p><u>Police – Inspector Pete Sparrow & Richard Salter – Community Coordinator for Mere & Tisbury</u></p> <p>There had been some changes in personnel – John Hutchings had been promoted which left the Salisbury and southern team running without a deputy. Nichola smith PCSO for Wilton was undergoing her training as a regular Police Officer, leaving her area covered by PCSO Matt Smith. He has an interest in the Rural Crime aspect of Policing.</p> <p>A Christmas campaign would start in Salisbury, targeting antisocial behaviour and shoplifting, trying to detect offences and deter this behaviour.</p> <p>The three main key areas of work for us to focus on at the moment were catapults, poaching and thefts.</p> <p>There had been some excellent CCTV footage from properties in this area which had been provided and resulted in some arrests. The provision of good quality home CCTV can greatly assist investigations.</p> <p><u>Richard Salter – coordinator for the west sector.</u> Just returned from a three month secondment, to represent the West Sector for Inspectors Fee and Green.</p> <p>Crime patterns in our area are similar to that for South Team. We are supporting Community Speedwatch, tackling hare coursing and lead thefts from church roofs, there was a lot of work going on behind the scenes on tackling this.</p> <p>Pete – There was recent success with two arrests in Devizes, following an incident of theft of lead from a church roof. One was from Salisbury one from Chippenham.</p> <p><u>Questions and comments:</u></p> <p>Were Police able to alert locals of number plates and suspect cars to look out</p>

for? – Answer: We have in the past sent out messages through the Community Messaging system. Regular updates are sent out of persons or vehicles of interests.

The MoD police had returned to Salisbury Plain, at Westdown camp in Tillshead, where they now have a station. They have powers of arrest and investigation. Hoping to develop partnership work with them. Mark does send out a lot of info in to the community, I will check with him to see if you are on his list.

As well as the Community messaging, there is also the Rural crime partnership – using social media and whatsapp with the local gamekeepers and farmers.

Community Engagement Manager (CEM) Update - Karen Linaker

Recent highlights on what has been going on in your communities:

- **Mere Community Area**: children's centre activities, literary festival, local fundraising events, fireworks, act of remembrance
- **Wilton Community Area**: history festival, progressing new town team, neighbourhood plan, Christmas lights switch on and family fun event on 6th December.
- **Tisbury Community Area**: Hindon neighbourhood plan, Tisbury neighbourhood plan has been through the inspector - on 28th Nov referendum goes out, Nadder Community Land Trust AGM, Tisbury Carnival, Silent Rhythm unveiled on 28 September, 0-5's Scrapstore fun here at Nadder Centre, school carols at the Nadder Centre
- **South West Wiltshire - Community Safety Group** – next meeting will be on 15 Jan 6.30pm, at Nadder Centre
- **Looking ahead to 29th January area board meeting**: Seeds 4 Success, the local youth network and health colleagues planning a young people's mental health debate
- We are trying to plan an event for March 2020, on employment and skills, working with schools and young people.

Decision

The Board noted the Partner Updates and written information items

Flytipping

It was noted that the Council was asking people if it is safe to do so, to take details of any incidents of flytipping and to report them, there were now rewards of £100 in successful convictions.

My Wiltshire - Demo of new App

Mark Tucker, Information Services gave a demonstration of the revised 'My Wiltshire App.

A new version of Wiltshire's Booking and Reporting web portal and mobile app, called My Wilts, was planned for release shortly.

The changes include a better system for our Customer Services Officers to use and a better experience for members of the public to log issues.

People will be able to submit a number of types of reports, some anonymously if desired, alternatively people could register and log in and then receive updates for the cases they submit. The plan is eventually for people to be able to book services and report issues on all Wiltshire Council services on the same system.

As well as providing an online form to submit information, a map function had been added to enable people to mark where an incident occurred. Pictures can also be attached to provide supporting evidence for their case.

Once submitted you would automatically be given a case number. If you have provided your email address, you would also receive an email with the progress.

For some case types, particularly those to do with roads and foot paths there is an option to view what other people had logged in the same area, and you can ask to be updated on it as well, if you are interested in the same issue.

Questions

- If you already have the old app, does that need to be deleted?
Answer: Yes we are moving suppliers, so everyone will need to create a new account on the new App. People registered for online for garden waste will have an account on the new system. The plan is that you will eventually need just the one log on for all of our online systems, currently you need a different log on for each system.
- When you roll this out and it gets lots of publicity, there may be duplication with several people logging the same pothole.
Answer: At the moment we do not have a way to show all of the cases logged, we are considering this for a later version. In the cases of potholes and trees in the road, information on these sorts of issues will be able to be shared.
- I am a technophobe, and only just got the old app to work. What will I need to do and when, to get the new logon.
Answer: The App on your phone would need to be deleted. The new one will be in the Apple Store and Google Playstore when it goes live. Once it is on your device the registration is done inside the app. People can choose to use one of their already created identities, such as Facebook,

	<p>Google or Microsoft rather than create a new account with Wiltshire if they wish.</p> <ul style="list-style-type: none"> • I use the app on my phone, I would like to see a map for all of my reports. It is hard to distinguish which of my reports is which. <u>Answer:</u> The map function will show all of the location-based cases in your area that you have logged. • To have more info on the audit trail is good, it helps to get the feedback on what has happened to the report so that you can close the case. <u>Answer:</u> For the systems where an operative is dealing with a case, they can put in public notes which can be viewed as a history as part of the case.
73	<p><u>Eco Friendly Communities</u></p> <p><u>Wiltshire Council</u> Richard Clewer, Deputy Leader & Cabinet Member for Corporate Services, Heritage, Arts, Tourism, Housing, Climate Change and Military-Civilian Integration gave a presentation on what Wiltshire Council was doing to tackle Climate Change.</p> <p>In February 2019 Wiltshire Council resolved to:</p> <ul style="list-style-type: none"> • Acknowledge that there is a climate emergency • Seek to make the county of Wiltshire carbon neutral by 2030 • Establish carbon baseline and renewables baseline <p>Cabinet committed to make Wiltshire Council carbon neutral by 2030</p> <p>County of Wiltshire:</p> <ul style="list-style-type: none"> • Strategy development – county of Wiltshire carbon neutral by 2030 • Local Plan review • Local Transport Plan 4 • Air Quality Strategy • Swindon and Wiltshire Local Economic Partnership – Local Industrial Strategy and Local Energy Strategy <p>All to contain policies and actions in support of carbon reduction</p> <ul style="list-style-type: none"> • Establishing carbon baseline and renewable energy baseline <p><u>Carbon and renewable energy baselines</u></p> <ul style="list-style-type: none"> • Further work required to ensure baselines are robust • Wiltshire Council in discussion with <ul style="list-style-type: none"> ○ Local universities ○ Anthesis Group (SCATTER) ○ Swindon and Wiltshire Local Economic Partnership ○ Local Government Association

- Other local authorities

SCATTER – setting city area targets and trajectories for emissions reduction

- Total level of emissions for county of Wiltshire 3,465k tCO₂e or 7 tCO₂e per head
- Highest emissions from on-road transport and residential buildings
- Department for Business, Energy and Industrial Strategy publish renewable energy statistics by local authority area
- Total renewable energy from county of Wiltshire 684.5MW with 593.5MW from solar farms

Wiltshire Council

- SCATTER – setting city area targets and trajectories for emissions reduction
- Total level of emissions for county of Wiltshire 3,465k tCO₂e or 7 tCO₂e per head
- Highest emissions from on-road transport and residential buildings
- Department for Business, Energy and Industrial Strategy publish renewable energy statistics by local authority area
- Total renewable energy from county of Wiltshire 684.5MW with 593.5MW from solar farms
- Investment in energy efficiency and energy generation on the council's estate of £5.2m
- Investment of £3.5m for canopy based solar panels
- Investment of £12m to convert street lights to LED lighting
- Reduction in waste to landfill from 56% in 2008-09 to 16% in 2018-19
- Reduction in greenhouse gas emissions from council's estate and operations from 26k tCO₂e in 2014-15 to 16k tCO₂e in 2018-19
- Friends of the Earth found Wiltshire Council to be the best performing local authority in England and Wales – but we know even the best performing need to do much more

Green Pledge

- Leave the car at home and walk more
- Take shorter showers and turn off taps when brushing teeth
- Try and use as little single-use plastic as possible
- Use a reusable cup
- Use bags for life
- Recycle as much as you can
- Turn off lights when not using them
- Install a smart meter to help you manage energy use

People were urged to have a think about the changes they could make, and to sign up to the Wiltshire Green Pledge.

Visit <http://www.wiltshire.gov.uk/green-economy-climate-emergency> to make your pledge – it only takes a couple of minutes.

Questions and comments included:

- You quoted Co2 – it would be good to see another slide which details how much could be saved by carrying out the suggested green pledge tasks.
- Why does Wiltshire not do food waste collection? Answer: It is expensive because of the large rural area, it will be covered in next item. Cllr Wayman added that for those that disposed of food waste could buy a subsidised green Joanna for composting.
- Street lighting, if you are going to invest in LED's, starting in Chippenham, how long will it take to come down here? Answer It is a two-year programme. The new LED's can be dimmed at 8.30pm and further dimmed at 10pm or programmed to be switched totally off. In the forward work programme, it states the work will come down here towards April 2020.
- Reducing carbon emissions and renewable energy – are you able to do anything about carbon soils and trees. Answer: We need to look at the whole picture, I would much rather make significant changes in reducing the amount of carbon going out.
- You need to consider the colour of the LEDs as some colours affect people.
- Planting trees and protecting other eco systems – you also need to think in terms of broader eco services that nature provides, it is vital you include this in your Strategy, and should be a core part of it. Answer: We are having discussions with the military in where we can put trees back on the plain.
- Maybe you could have a steering group with all of those organisations in the community?
- There is a certain amount of self-help we can do, like saplings for communities to plant themselves. The recycling centre for Salisbury is atrocious is there a plan to replace that? Answer: The plan is to move the depot when an alternative is identified, this is part of the Depot Strategy.
- Bearing in mind this is an emergency, you are talking about this time next year, but there are things you can do now. There are two companies that do 100% renewable energy. Answer: We have done this.
- There's no point in burning the heat in a house that hasn't been lagged, you need to enforce the same restrictions and requirements on the extensions and existing buildings too. Answer: We need to look at how we can make the government framework work for us.

The Board was looking to existing local groups to share their work, with the aim of spreading the word of what could be achieve locally.

Local Initiatives and Groups

Nadder Community Energy

We have 16 buildings so far; our first project was farm buildings and the second was solar panels on schools.

	<p>Electric car club – This is a rural area car club. There will be an installation of an electric parking bay at Nadder Centre, people can sign up and use the car.</p> <p>Tisbury Mobile Refill Shop This is where people can bring their own container to refill products from our vehicle which will travel through the villages.</p> <p>Nadder Centre This building is virtually carbon neutral, there is a charging point outside for electric cars.</p>
74	<p><u>Changes to Kerbside Collection</u></p> <p>Cllr Bridget Wayman, Cabinet Member for Highways and Waste gave a presentation on the changes to the Kerbside collection service which were due to be implemented from February 2020.</p> <ul style="list-style-type: none"> • The council would be changing the way it collects materials for recycling in 2020 • As part of these changes some recycling collection days would change • Residents would receive further information through the post, including details of new collection days, in advance of changes being made • You would be able to view your new collection days and print a collection calendar from the council’s website once these days had been confirmed <p>Making it easier to sort your recycling:</p> <ul style="list-style-type: none"> • When service changes are implemented, in addition to plastic bottles, pots, tubs and trays and as well as cardboard boxes and food and drink cartons, you would be able to include paper, food and drink cans, aerosols and foil in your blue lidded bin • Please rinse and squash your recycling where possible • Plastic film, black plastic and flower pots cannot be recycled using the blue lidded bin <p>Why are we making these changes:</p> <ul style="list-style-type: none"> • The changes would make it even easier for residents to use the kerbside recycling collection service and would reduce the number of vehicles used • Fewer vehicles meant a reduction in the impact on the environment • A new materials recovery facility was being built which will sort the recycling, reducing the requirement for residents to separate their recyclable materials at home <p>Further Information:</p> <ul style="list-style-type: none"> • All collections would remain fortnightly • To keep up to date with future developments, sign up for email alerts on

	<p>the waste pages of the council's website</p> <ul style="list-style-type: none"> • If you think you may need a larger blue-lidded bin or an additional blue lidded bin you can register via the council's website via the following link wiltshire.gov.uk/rubbish-and-recycling-collection-changes <p>How you can help your community: Town and parish councils and community groups play a key role within communities. We wish to work with you to advise residents of these service changes. If you would like assistance with:</p> <ul style="list-style-type: none"> ○ Writing an article to be published in your town or parish magazine or community newsletter ○ Obtaining information for your town or village website or community Facebook site ○ Requesting posters for you to display within your area ○ Inviting a waste officer to a parish council or other local meeting to talk about these changes <p>please let us know by emailing wasteandrecycling@wiltshire.gov.uk</p> <p><u>Questions and comments:</u></p> <ul style="list-style-type: none"> • Delighted to hear you are building a new facility in Calne, why will you not include plant pots and film? <u>Answer:</u> We cannot include plastic film, as it costs more carbon to recycle it than to make it, when that process improves, we will look at the option again. • A lot of people would find it inspiring to find out what happens to all of the recycling. <u>Answer:</u> There is an end use list on the website. • You can make things made from recycled plant pots, 'the Short Walk' is a company in Devon that do this. There are also charities that are pleased to take plant pots for when they sell on plants for charity. • Information on which products go where, would be a benefit for users of the HRC. • A repair café has just opened in Salisbury. <u>Answer:</u> We do need to do more locally in Wilton, Tisbury or Mere. • There needs to be a domestic battery recycling point in Tisbury. <u>Answer:</u> You can take these to the household recycling centres.
75	<p><u>Community Area Transport Group (CATG) Update</u></p> <p>The Board considered the recommendations for funding arising from the last CATG meeting held on 6 November 2019, as detailed in the report attached to the agenda.</p> <p><u>Decision</u> The South West Wiltshire Area Board approved the recommendations of the CATG arising from the meeting held on 6 November 2019.</p>

Area Board Funding

The Board considered five applications to the Community Area Grant Scheme for 2019/20, as detailed in the report attached to the agenda.

Chalke Valley Sports Centre – requested £1795

Club Secretary spoke in support of the application.

Decision

Chalke Valley Sports Centre was awarded £900 towards the Petanque Rinks project.

Fovant Parish Council – requested £2330

The Chairman of the parish council spoke in support of the application.

Question: These works include renewal and painting of equipment, usually PC's pay for their play areas out of their precept.

Decision

Fovant Parish Council was awarded £1200 towards the upgrade works to the play area.

Compton Chamberlayne Village Hall – requested £800

The applicant spoke in support of the application, noting that there were not many options for hiring out the hall as it was small. Most of the village contributes an annual sum.

Decision

Compton Chamberlayne Village Hall was awarded £500 towards the floor refurbishment works.

Tisbury Halls – requested £3621.06

The Chairman of Tisbury Halls, spoke in support of the application.

Questions:

You show free reserves for £24k, what are they for? – Answer: They are earmarked for other projects.

The Nadder Centre was designed to accommodate the request to retain a stage and facilities to support this group.

Decision

Tisbury Halls was awarded £1800 towards the Audio/Visual and Electrical upgrades at the hall.

Tisbury Community Benefit Society

The applicant spoke in support of the application. It was noted that there would

be a service from the mobile shop and it would advertise the new way of thinking. This was a comm benefit structure, an example of community action. It was not a charity and did not have charity status.

Cllr Wayman noted for clarity that her son's girlfriend ran a refill shop in Shaftesbury. As this was not a pecuniary interest, Cllr Wayman took part in the debate and vote on this application.

Questions:

Had Tisbury PC be asked to contribute funds towards this? Answer: The route would include visiting all 38 parishes across the community area, which was why we had not approached Tisbury PC for a contribution, as it was felt unfair to single out just one parish when many would benefit.

Have you trialled this? Answer: There are other static shops around, and a refill shop in Bridport that delivers in an electric van.

There was already a community shop in Tisbury, there was a risk that other businesses coming in may compete with that and endanger the livelihood of Tisbury Highstreet.

The funds are to pay a salary to the driver. The Community Area had several community shops that were quite successful, we need to be mindful not to hinder them.

The Board proposed deferring a decision to allow further information to be presented. The CEM would liaise with the applicant to take this forward.

Decision

The application from Tisbury Community Benefit Society was deferred pending additional information.

Youth Funding

The Board considered the two youth funding bids as detailed in the agenda.

Youth Worker for Seeds4Success, Jakki Farrell spoke in support of both funding bids.

Decision

Seeds4Success – Open Access Youth Work Opportunities was awarded £10,000 of Youth Funding

Decision

Community First/Youth Action Wiltshire – Bridging Project Outdoor Education Experience was awarded £2180 of Youth Funding.

77	<p><u>Late Item: Silent Rhythm - Nadder Centre - Funding</u></p> <p>The Board considered the recommendation which had been circulated at the meeting, and listed below, to allocate additional funding to the Silent Rhythm Art Installation project.</p> <p><i>Recommendation</i> <i>To assist with the final elements associated with the installation of Silent Rhythm at the Nadder Centre and to provide a contingency for community engagement plans that are developing, the Area Board is asked to earmark a further £4,000 to this project.</i></p> <p>Cllr Deane noted that a report would be brought back to a future Board meeting to clarify the final details of the youth and educational aspect, once finalised.</p> <p><u>Decision</u> The South West Wiltshire Area Board allocated up to £4,000 to the Silent Rhythm Art Project at the Nadder Centre, with the condition that full costings and clarification on the Youth Engagement Programme aspect be presented to a future Board Meeting.</p>
78	<p><u>Close</u></p> <p>The next meeting of the South west Wiltshire Area Board will be held on Wednesday 29 January 2020, 6.30pm, at the Nadder Centre, Tisbury.</p>
<p><u>Attachments: LED Street Lighting Project</u></p>	

This page is intentionally left blank

Wiltshire Council LED Street Lighting Project



November 2019

Wiltshire Council LED Street Lighting Project

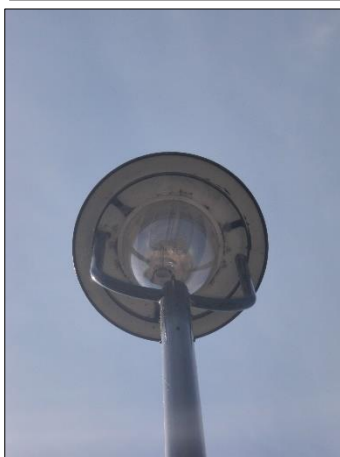
There are almost 45,000 street lights on Wiltshire Council's highway network. Energy costs have risen sharply in recent years, and are likely to continue to rise in the longer term. The annual cost for street lighting energy is currently over £1,900,000, and with current budget restrictions these costs are becoming increasingly unaffordable.

Light Emitting Diode (LED) lighting is energy efficient and has reduced in price considerably in recent years. At present, only 3% of the Council's street lighting is LED lighting, with the majority being the older low pressure sodium (SOX) or high pressure sodium (SON) units. The SOX units are becoming obsolete and going out of production, and are becoming increasingly difficult to obtain. Keeping the older units operating is no longer possible in the longer term.

LED lights use considerably less energy than the older SOX and SON units. A major advantage is that LED lights provide the opportunity to dim the lighting during off-peak periods to further reduce energy consumption. LED lighting dimmed between 8.00pm and 6.00am, with additional dimming after 11.00pm, would typically reduce energy consumption by 69% compared to the current SOX units.



The heritage style and other special units will be converted separately at the end of the programme. Their external appearance will remain unchanged.



It is proposed to convert most of the Council's street lighting to LED units over the next two years. The cost of the project is £12,295,000 and it is expected to have a pay back in 11.88 years, but this could be substantially sooner depending on future energy costs.

Proposed Scheme

The conversion to LED lighting starts in October 2019. The lights will generally be converted based on the current programme of cyclic routine maintenance and testing of the street lighting, which is based on geographic areas. The indicative programme is set out below.

Area	Indicative Programme
Chippenham	October – December 2019
Amesbury	January 2020
Salisbury/Wilton	February – April 2020
Westbury	May 2020
Melksham	June – July 2020
Devizes	August – October 2020
Calne	November – December 2020
Trowbridge	January – February 2021
Warminster	March 2021
Downton	April 2021
Mere	May 2021
Marlborough	June 2021
Royal Wootton Bassett	July 2021
Malmesbury	August 2021
Corsham	September 2021
Bradford on Avon	October 2021

The programme will be reviewed as the project progresses and may be revised as resources become available.

Frequently Asked Questions

1. What are the benefits of LED lighting?

The advantages of LED lighting include:

- LEDs are much more efficient and use much less electricity than other lamps or bulbs for similar output, reducing energy costs.
- Have extremely long lives compared to traditional lights.
- Produce very little heat.
- Produce much fewer carbon emissions through energy generation.
- Contain no mercury.
- Can operate effectively in both cold and hot environments.
- Produce a white light to enable the human eye to see natural colours at night.
- Are much more directional than other lights, reducing 'sky glow' and glare.
- LEDs are instantaneous and function at full output when switched on. No warm-up times as with most street lighting.
- They can be dimmed at off peak times.
- They provide improved uniformity of light.
- Variation in colour temperatures are available for specific applications.

2. Does the Council have to provide street lighting?

There is no duty on the Council to provide street lighting, but the safety and other benefits for the local communities are appreciated, and Council's have traditionally provided street lighting.

3. Why not turn off the street lights instead?

Street lighting has benefits in terms of road safety and public safety. It supports the night time economy and helps reduce the fear of crime.

4. Why make such a massive investment in street lighting?

Energy costs have been rising enormously in recent years and, with the other services the Council has to provide, the cost of energy for the street lighting is becoming increasingly unaffordable. The savings in energy costs will help pay for the new lighting, and the project will significantly reduce the Council's carbon footprint.

5. Why change the existing lights?

There are massive energy savings possible with the modern units. Older low pressure sodium lights will no longer be in production from 2020, and it will be necessary to replace them eventually.

6. How much energy will the project save?

The project is expected to reduce the annual energy consumption of the Council's street lighting from 12,977,500 KWh to 5,262,291 KWh. The reduction in energy for each light will vary according to the unit, but is likely to be as much as 69% in some cases.

7. Will it reduce the Council's carbon footprint?

There will be a significant reduction. It will reduce street lighting CO₂ by 1,770tCO₂ (from 4,950tCO₂ to 3,180tCO₂.)

8. Will the new lights give the same light as the existing units?

They will provide similar lighting levels, but the older sodium lights have a greater upward light proportion and much more light spread. This can cause pollution of the night sky but may have benefits in illuminating adjacent properties. It is not always possible to do an exact like for like replacement given the different types of lighting, and the intention is to provide something appropriate for the location.

9. What LED lighting units will be used?

It is proposed to use LED units with what is known as a colour temperature of between 2700k and 3000k for most of the lights, which are often referred to as warm. Some other LED lights have a higher colour temperature of 4000k which some campaigners have had concerns about. The units to be used for this project will be Axia 3 lights manufactured by Urbis Schreder.

10. Will the new lighting conform to modern design standards?

The existing street lighting has been installed over the years to varying design standards. The intention is to provide an appropriate level of lighting with the new units, but the use of the existing columns will mean that some deviation from current design standards will be inevitable.

11. Will the lighting be turned off for part of the night?

Some street lights in towns and villages are currently turned off for part of the night. The new lighting is much more energy efficient, and it is not currently intended to turn them off at night, but they will be dimmed to lower levels. Where requested consideration will be given to continuing the part night operation of particular units if it has local support.

12. Will all the lighting be dimmed?

It is proposed to dim most of the lighting between 8.00pm and 6.00am, with additional dimming after 11.00pm. Lights at zebra crossings, areas with greater highway safety requirements, and areas with significant night time activity would generally not be dimmed.

13. Will the new LED lights still light up my driveway and doorway?

Street lighting is intended to light the adopted road and pavement. The lighting of private property is the responsibility of the homeowner or tenant.

14. My street seems a lot brighter since the new lights have been fitted. Why is this?

Many Wiltshire Council streets will have been illuminated to differing standards throughout the years. With the introduction of LED lighting a review of the lighting requirements based on location, usage and other factors will be applied. This may result in an increase in light output and light level on the street, but at a level which is appropriate and compliant with standards.

Where there is an increase in light levels in some streets, the LED equipment will still provide energy savings in comparison to the old lights, which were very energy inefficient

15. My street seems darker since the new lights have been fitted. Why is this?

Many Wiltshire Council streets will have been illuminated to differing standards throughout the years. With the introduction of LED lighting a review of the lighting requirements based on location, usage and other factors will be applied. This may result in a reduced light output but one which is appropriate and compliant with standards.

16. Will the lighting columns be replaced at the same time as the lanterns?

Most columns will not be replaced. However, those that are in poor condition or damaged will be replaced as necessary.

17. Will the lighting have motion sensing?

No. It is important to avoid sudden variations of lighting levels for drivers as it takes time for the eyes to adjust and it could be dangerous.

18. Could solar powered lighting be used instead?

At present solar powered units on the columns are generally not suitable, but the situation may change as technology develops.

19. Will there be a reduction in Council tax?

No. The scheme will save money in the longer term and will help reduce the potential scale of future increases and avoid having to turn lights off.

20. What are other Council's doing?

Many other authorities have already converted their lighting to LED units in order to save money, and others are likely to do likewise in the near future.

21. Why haven't the Council written to every resident?

It would cost a significant amount of money to write to every individual household in the county, and as street lighting is not being removed or turned off it was not considered necessary.

22. Can changes be made to the new light once installed?

The Council will be extending the existing central control and management system so that most of the county's street lights can be controlled remotely. This will allow some alterations to the lighting to be made in response to changing circumstances.

23. Will all lighting units be changed?

The intention is to change nearly all the Council's street lights. Some of the heritage style or special units may be changed towards the end of the programme.

24. How long will it take to change each lantern?

In most cases it will be just the lantern which will be upgraded, and usually this will take around 15 minutes. Where other ancillary works or the street lighting columns as well as the lantern need to be replaced, this will take longer. Some electrical connections may have to be undertaken by the electricity company and it will be necessary for them to complete the works.

25. What about Conservation Areas?

In conservation areas the new lights will be coloured black as are many of the existing columns. The lights will have a 'warmer' appearing light. Lighting columns are not being replaced as part of this project unless they are unsafe. Should town councils or others wish to contribute to the cost it may be possible to replace existing columns with heritage style units or other enhancements.

26. What about Areas of Outstanding Natural Beauty?

In Areas of Outstanding Natural Beauty (AONBs) the lighting will have the 2,700k warmer appearing light. Most units will be installed at 0° inclination to reduce light spill, with lighting levels dimmed later in the evening. The new lighting will reduce light spill and contribute to improving the dark skies.

27. Will my street be dark during the changeover?

In most cases the conversion will be a quick operation done during the day. However, where columns have to be replaced some lights may be out of operation for a short period. Care will be taken to avoid creating large dark areas during implementation.

28. Will I be able to access my property while the work is done?

Every effort will be made to ensure that roads remain open whilst we work. However, there may be very short periods when we need to control traffic to protect the safety of both the public and our workforce. If you need to access your property at any time during

the works, please inform the on-site team at the earliest opportunity and suitable arrangements will be made. Pedestrian access will be maintained at all times.

29. What about lights affected by trees?

Where trees are blocking existing lighting, the trees will be pruned if appropriate. If they are in private ownership the tree owners will be approached regarding the works required. The work on the trees will be carried out by experienced operatives in accordance with environmental restrictions, taking into account the health of the tree, nesting birds, and any other restrictions. In some cases, relocation of the lights may be considered.

30. What happens to the old lights?

In the short term some of the lanterns may be used as temporary replacements for other lights, but in the longer term they will all be recycled via approved methods in accordance with regulations.

31. How long will the new lights last?

It is anticipated that the new units will last 20 to 25 years. The older lamps currently in use usually have to be changed every 3 to 6 years.

32. What consultation has taken place?

As lighting is not being removed or turned off it was not considered necessary to hold public consultation regarding these proposals.

33. When will the changes take place?

It proposed to start changing the units in October 2019, with the programme expected to take about two years.

34. Will the changeover be noisy?

No. Generally it will be fairly quick to make the changes, with most of the work done during the day. If columns have to be replaced for safety reasons this takes longer and will require excavation to remove the old column, erect the new one, and transfer the electrical connection.

35. Will the new lights make the roads safer?

As LEDs produce a natural white light, this enables the human eye to see in colour and with improved peripheral vision. This should make your road look safer and help reduce crime and the fear of crime.

36. Will the new lights be as bright?

LED lights are slightly brighter at source than traditional light sources, but the ability to direct light will minimise glare. The directional qualities of the lanterns also reduces light

spill into and onto properties in the majority of situations as well as significantly reducing sky glow.

37. Are there health implications with LED lighting?

There is no evidence this type of lighting is any more harmful than other forms of lighting in normal circumstances.

38. Will the lighting affect wildlife and the environment?

The introduction of the new lighting will provide the opportunity dim and reduce lighting levels at sensitive locations. The scheme has the potential to have environmental benefits compared to most existing lighting types due to significant reduction in the emittance of UV light.

39. Do LED lights contain hazardous chemicals?

No. The street lighting LEDs contain no hazardous chemicals, unlike most of the older lamp types.

40. Is it true LED lights produce blue light that can disrupt sleep?

LEDs can produce more blue light than traditional discharge street lighting, but it is a tiny fraction of the content in natural daylight, and does not have any detrimental effect on people. Research indicates that light exposure needs to be very high in order to disrupt sleep patterns. Typical street lighting levels are less than light levels normally found in the home. The use of handheld phones, tablets and computers is likely to have a greater impact.

41. Are LED lights dangerous to the eyes?

Studies examining the effect of LEDs and other sources on the retina have concluded that they do not present any risk to the retina for short exposure times. However, it is best to avoid looking directly at any light source, natural (including the sun), or artificial, for any length of time. The luminaires used have been specified to be no worse than Risk Group 1, which means no specific precautions need to be taken.

42. Why are the new lights not orange or yellow like the old ones?

Some of the existing street lights use sodium which produces a light that appears orange in colour. LED lights produce a white light which makes it easier to recognise colours, improving visibility for road users and pedestrians. Unfortunately the low pressure sodium lights were not energy efficient and consequently are going out of production. With the ending of the manufacture of the older lights it will not be possible to make like for like replacements with regard to colour of the light.

43. Will I be disturbed by light shining through my windows?

Older street lighting tends to spread light in all directions, including upwards. LED street lighting is less wasteful and directs the distribution of light down towards the road and

pavement. This helps in reducing any light intrusion into homes and gardens. Where appropriate additional dimming or shielding could be applied to further minimise concerns.

44. Do the new lights contain 5G communications?

No. The lights are controlled by a Central Management System and communicate to a base station via the Ultra Narrow Band (UNB) low bandwidth and low power wireless / radio communications on the open network frequency. The base stations communicate data to the central server via the usual mobile phone networks with 2G, 3G or 4G depending on what network is available. The same communications system has been operating in the towns in Wiltshire since 2014, and is now being extended to the rural areas.

45. Why are LED's considered to be environmentally friendly?

They are designed to have a long life span of around 20 to 25 years of near maintenance-free service. Unlike with conventional street lighting units, there is not the need for frequent lamp changes, which means there is reduced waste and unit attendance. This means:

- reduced annual energy consumption required to keep street lights illuminated;
- reduced disposal of old lamps containing harmful mercury or other materials;
- reduced fuel used and the accompanying pollution to service lights;
- reduced potential for disruption on the highway network through lane closures or road works to maintain the lights;
- less natural resources and energy used to produce replacement lamps for maintenance;
- less fuel used to transport the lamps from the factory (most likely overseas), to the distributor, to the contractor, to the job site.

For further information contact email:

streetlighting@wiltshire.gov.uk

Or write to:

Highways Asset Management
Wiltshire Council
County Hall
Trowbridge
Wiltshire BA14 8JN

Issues regarding street lighting can be reported through the My Wiltshire app or on-line at:

<http://www.wiltshire.gov.uk/mywiltshire-online-reporting>



This page is intentionally left blank

WILTSHIRE POLICE

CPT Area Briefing

Salisbury Area Community Policing Team

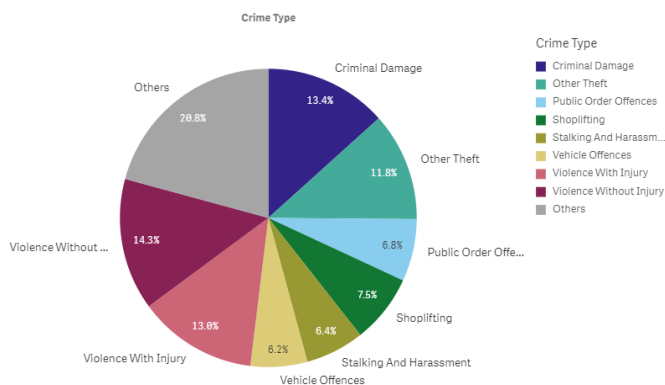


Proud to serve and protect our communities

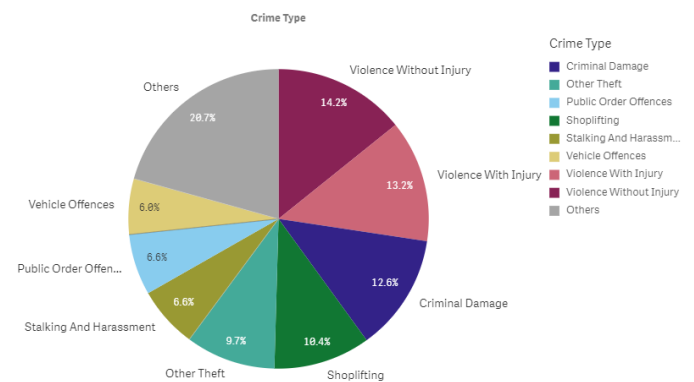
January/February 2020

PERFORMANCE

Your Area - Five Highest Crime Groups (Previous 12 months)



Force Area - Five Highest Crime Groups (Previous 12 months)



Wiltshire South and South East CPTs - crime and incident demand for the 12 months to November 2019

Force-wide

- Wiltshire Police has had an increase in the volume of recorded crime by 4.5% in the 12 months to November 19 and continues to have one of the lowest crime rates in the country.
- Our service delivery remains consistently good.
- In November, we received 8,234 999 calls which we answered within 5 seconds on average and 11,604 CRIB calls which we answered within 1 minutes 28 seconds on average.
- In November, we also attended 1,594 emergency incidents within 10 minutes and 30 seconds on average.
- Wiltshire Police has seen a 10% reduction in vehicle crime and 9% in residential burglaries in the 12 months to November 2019.
- The Crime Survey of England & Wales recently ranked Wiltshire as one of the top forces (78.3%) nationally for public confidence. It covers the 12 months to March 2019. The publication can be found here: WWW.CRIMESURVEY.CO.UK

For more information on Wiltshire Police's performance please visit:

PCC's Website - <https://www.wiltshire-pcc.gov.uk/article/1847/Performance>

HMICFRS Website - <https://www.justiceinspectrates.gov.uk/hmicfrs/police-forces/wiltshire/>

Police.uk - <https://www.police.uk/wiltshire>

WILTSHIRE POLICE

CPT Area Briefing

Salisbury Area Community Policing Team

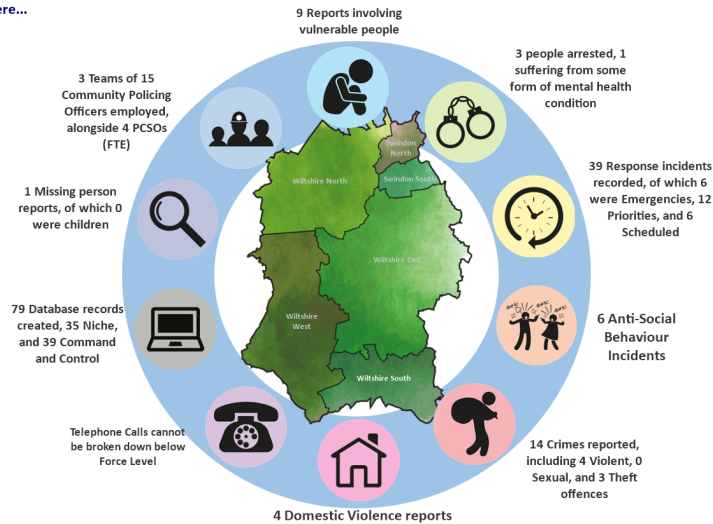


Proud to serve and protect our communities

January/February 2020

Area specific Performance

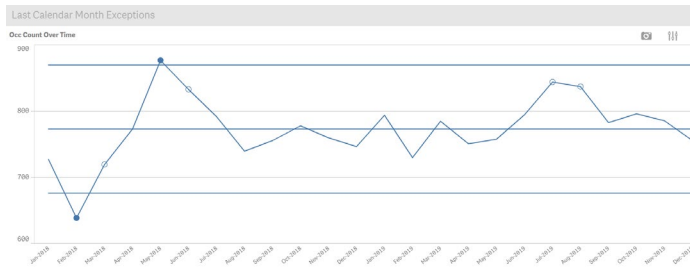
On an average day in Wiltshire South there were...



Wiltshire South / South East CPT Demand Overview – 12 months to November 2019

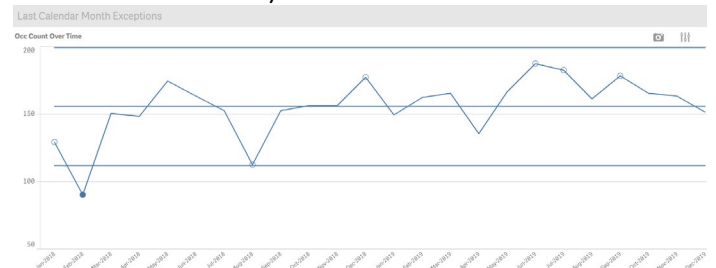
Salisbury CPT Demand over 2 years:

No Exceptions but Burglary Business high for Dec(24) Ave 13.5.



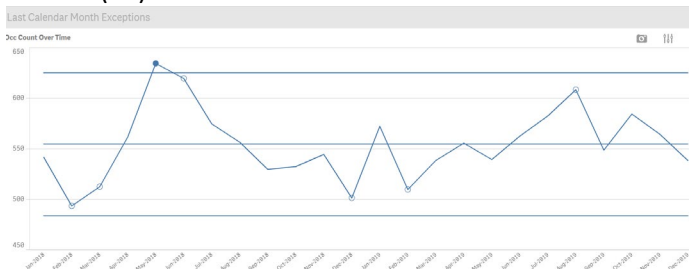
Southern Area Board Demand over 2 years:

Exception: Short Term High in Possession of Drugs (Dec 5 offences – Ave 1.75)



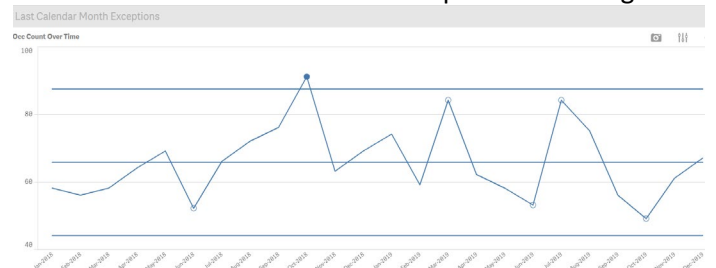
Salisbury Area Board Demand over 2 Years:

Exception: Short Term High in Trafficking Drugs (5 offences in Dec – Ave 2.5)
Not an exception but caution for Burglary Business high for Dec (18) Ave 8.1



Wilton (SW Wilts Area Board) Demand over 2 years:

Exception: Bicycle Theft (Dec 3 offences – Ave 1.3)
Caution - Small numbers can create peaks and troughs.



WILTSHIRE POLICE

CPT Area Briefing

Salisbury Area Community Policing Team



Proud to serve and protect our communities

January/February 2020

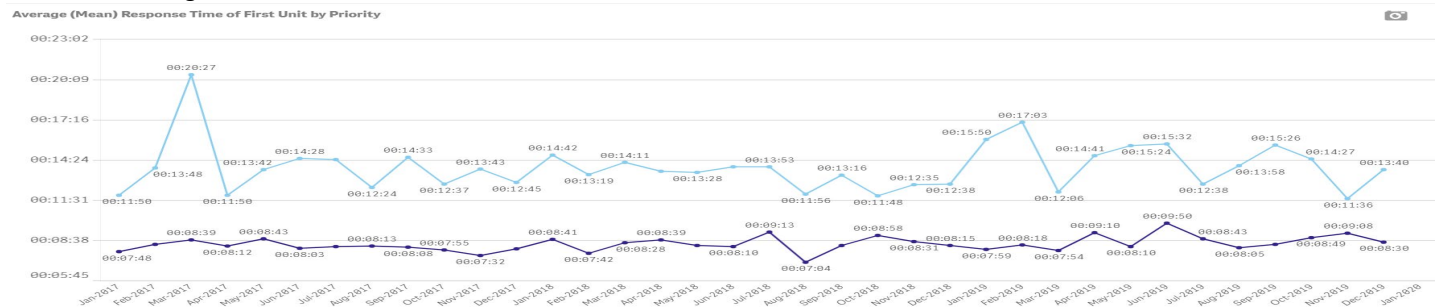
The ability to respond to immediate demand across our approx 300² miles in a timely manner when required is key to successful policing. Below are the last 3 years average Immediate response times, broken down to Area Board level.

Response Times Salisbury CPT

Immediate Urban (within 15 minutes standard)

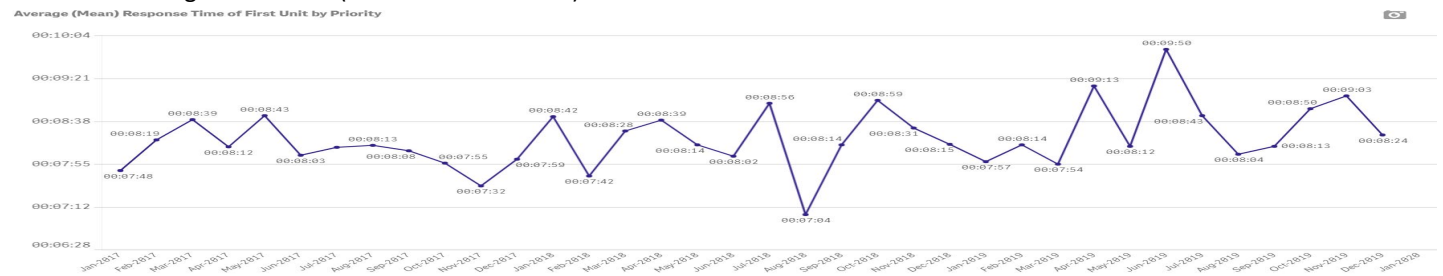
Immediate Rural (within 20 minutes standard)

December averages: 08:30 min Urban / 13:40 min Rural



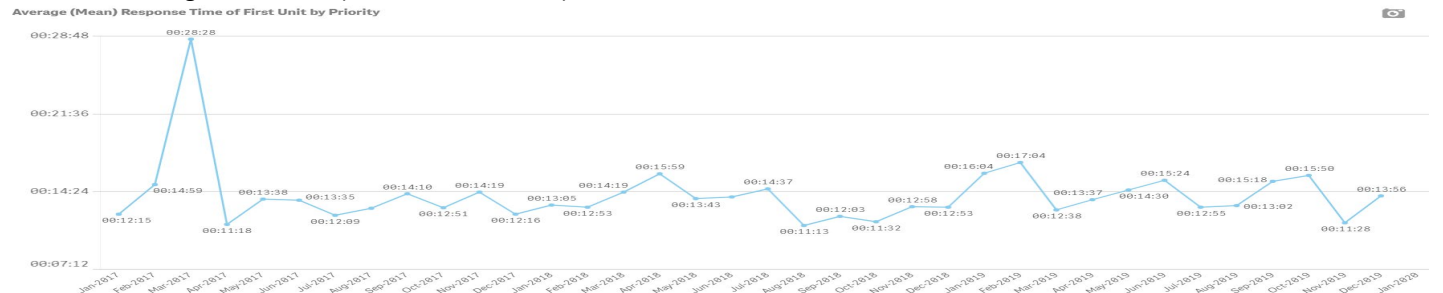
Salisbury Area Board Beats

December average: 08:24 min (15 minutes Standard)



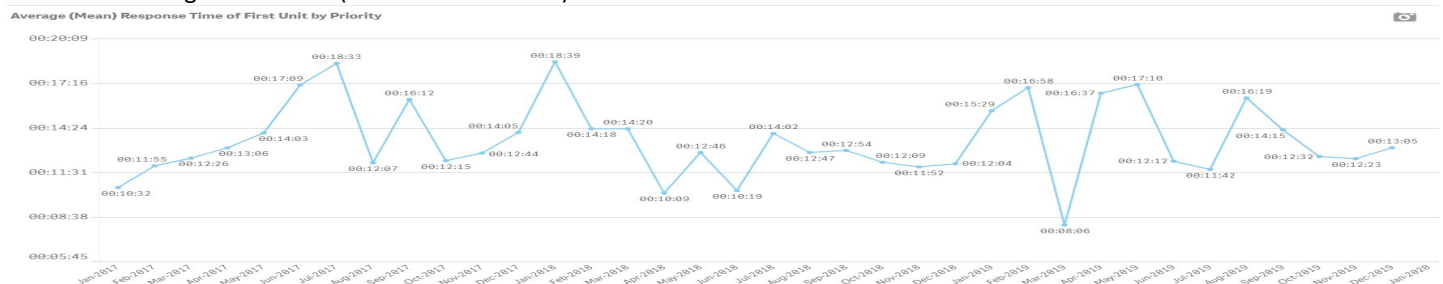
Southern Area Board Beats

December average: 13:56 min (20 minute Standard)



Wilton Area Board

December average: 13:05 min (20 minute Standard)



WILTSHIRE POLICE

CPT Area Briefing

Salisbury Area Community Policing Team



Proud to serve and protect our communities

January/February 2020

HIGH LEVEL CPT UPDATES:

Operation Uplift: Although we have yet to see the arrival of New Constables we have received 3 new PCSOs, Hannah Cranham, Grace Akers and Nicola Bird who are making themselves known on their new beat areas. Sadly, we have had to say goodbye to Kady Green who has relocated to start a new life outside of Policing and we will lose Harry Evans in February, who leaves to become a Constable. We look forward to watching his development.

Community Policing continues to evolve and we will build a team of Neighbourhood Officers, consisting of 2 Sgts, 4 PCs, and all our PCSOs. This team will continue to use our Problem Solving approach in order to analyse and identify concerns and resolve the matter, reducing demand across our communities. Details of the Team are below.

Operation Hamper: Recognising that Salisbury has a seasonal rise in reported theft and ASB, particularly around the City Centre, Op Hamper was introduced. This was intended to:

- Deny Space for offending – a high visible presence within the City
- Detect Offences at the time
- Deter Offenders from choosing to come to Salisbury to commit crime.

The operation relied upon Partnerships, making better use of the ShopWatch and PubWatch radio systems, linking the City CCTV and the Police to the Shops and Licenced Premises. Crime Prevention advice was key. Research shows that preventative measures used by shops before offences occur are far more effective than enforcement options after the event.

Result: We witnessed a rise in reported Shopliftings during November and early December, before a sharp fall in both Shoplifting and ASB during December. With 27 reported shopliftings in December (53 in November), only 2 had no recorded suspects making significantly higher detection rates.

This operation will continue in 2020 under the less seasonal name of **Op Vendor**.

Cat Thefts: We are experiencing an increase in catalytic converter theft/attempt thefts, particularly from 4x4 vehicles such as Landrover Freelanders and Honda CRVs. These vehicles are favoured as they provide easy clearance to get under the car, so some simple preventative advice can assist you:

Do not park with one wheel on the pavement.

If possible, park in a garage or off the road and in well-lit areas or under CCTV.

Use hard features, such as walls or fences to make it harder to get under your car.

Please report any suspicious people under vehicles to the police with as much detail as possible, including vehicles associated to them.

Burglary in West Gomeldon: Liam Lowrey (20) from Swindon was identified as the lookout for a burglary in June based on excellent CCTV images. Images on his own phone assisted with the identification, wearing the same clothes! At Swindon Crown Court on 17/12/19 he received 2 years detention in a Young Offenders Institution. We have yet to identify the other 3 offenders who entered the property.

WILTSHIRE POLICE

CPT Area Briefing

Salisbury Area Community Policing Team



Proud to serve and protect our communities

January/February 2020

Vulnerable Rough Sleeper:

Concerns were raised for the welfare of a vulnerable rough sleeper who has lived within the city for several years. Although previous engagement efforts had been met with resistance from the individual, it was evident that her health had deteriorated and that she was at risk of death or serious injury if left on the street during Winter. A multi-agency high risk behaviour meeting considered all the factors resulting in her admission to hospital against her consent and is now in a specialist placement that can support her needs.

Graffiti: Salisbury CCTV captured excellent images of youths graffitiing in the City earlier in 2019. Following circulating the images on social media, the parents of two youths brought them to the Police Station where they were interviewed and made a full admission. As a Community Resolution, they were brought back to the City under the supervision of a City Ranger and Police, where they assisted with cleaning graffiti from a shop window near the Poultry Cross. Although they were not responsible for all of this graffiti their remorse and willingness to do something positive is a better outcome than to have instantly criminalised the offenders.



Reward & Recognition:

- **PCC Volunteer of the Year - Police Cadet Andrew Foord.** Andrew has been a Cadet since 2016 and received his award for creating 2 videos aimed at the youth audience surrounding Knife Crime and County Line Drug Dealing.
- **Daniel Cooper Memorial Award for Outstanding Service to Members of the Public – Police Constable James Barrett.** James was recognised for his commitment to Policing in Salisbury, with particular mention towards rural crime, an investigation into an organised crime group and leading a national hunt and capture of a particularly violent burglar. He is commended for the high standards he sets and delivering exceptional levels of service to Wiltshire Police and the Communities he serves. James joins our Neighbourhood CPT in January.

WILTSHIRE POLICE

CPT Area Briefing

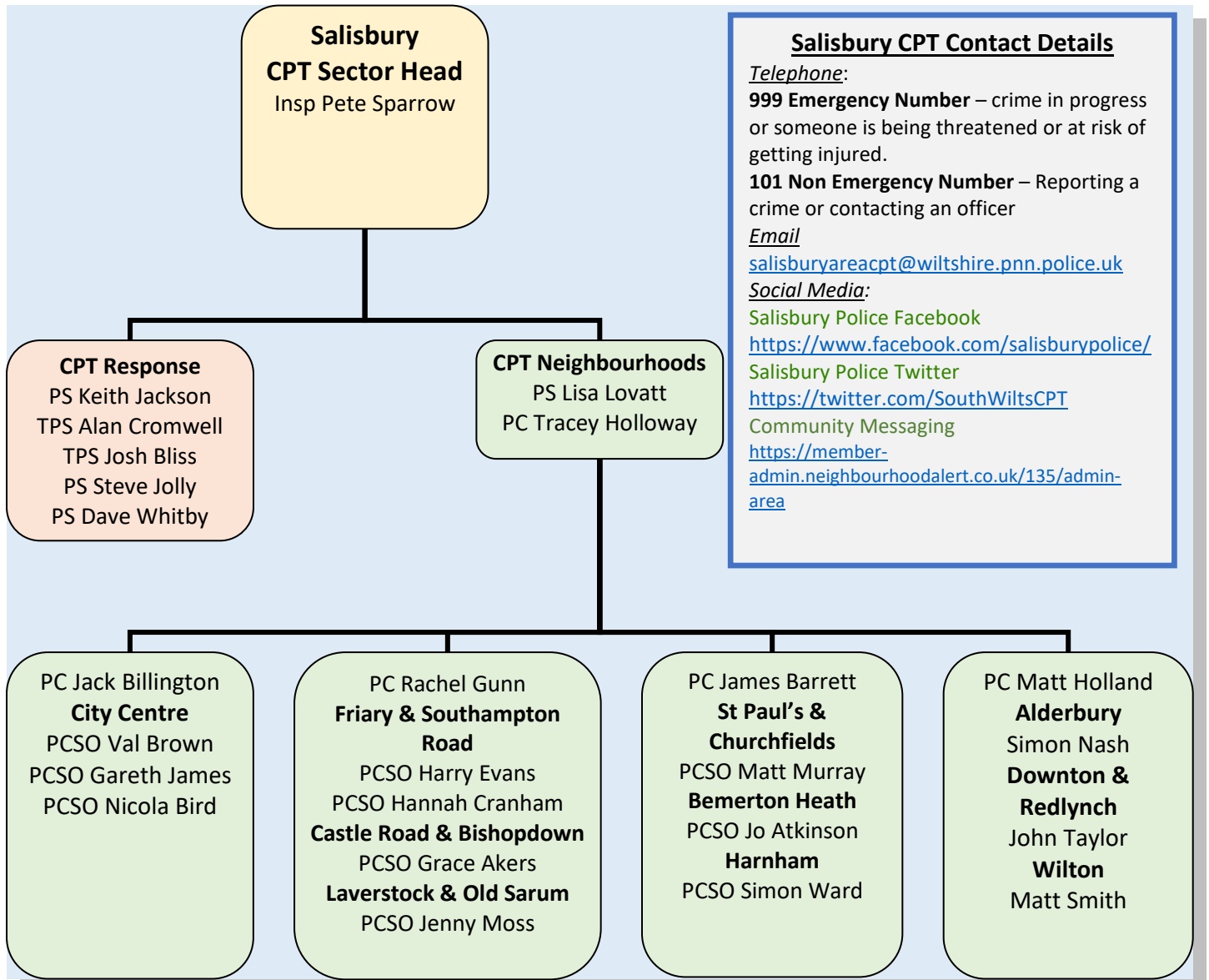
Salisbury Area Community Policing Team



Proud to serve and protect our communities

January/February 2020

Salisbury Community Policing Team



Salisbury CPT Contact Details

Telephone:
999 Emergency Number – crime in progress or someone is being threatened or at risk of getting injured.
101 Non Emergency Number – Reporting a crime or contacting an officer

Email
salisburyareacpt@wiltshire.pnn.police.uk

Social Media:
 Salisbury Police Facebook
<https://www.facebook.com/salisburypolice/>
 Salisbury Police Twitter
<https://twitter.com/SouthWiltsCPT>
 Community Messaging
<https://member-admin.neighbourhoodalert.co.uk/135/admin-area>

Visibility & Engagement: If you wish for Police to attend an event or meeting, please contact us with your specific request by email and we will try to attend.

You can find out more about Wiltshire South CPT, including news stories and contacts for local officers, on our website: www.wiltshire.police.uk/WiltshireSouth

WILTSHIRE POLICE

CPT Area Briefing

Salisbury Area Community Policing Team



Proud to serve and protect our communities

January/February 2020

LOCAL PRIORITIES

PRIORITIES FOR SALISBURY CPT	Comments
Priority 1: Burglary Business	
To address the rise in Business Burglary offences across the area.	Review crime series to establish patterns and investigative opportunities
Priority 2: Op Hamper or Op Vendor	
Continue our efforts to address the ASB and Thefts within the City in Partnership with ShopWatch and PubWatch making best use of our CCTV resources.	High Visibility Patrols: Deny Space for Criminals Detect Offences at the time Deter Offenders
Priority 3: Rural Crime & Hare Coursing	
OP Artemis. This operation links actions and resources from Wiltshire Police, Rural Crime Partnership and FarmWatch. Pro-Active and high visibility patrols are being conducted across the Rural areas in support of this priority.	PCSO Matt Smith has just completed his drone training, which we hope will assist with future rural operations.
Priority 4: Community SpeedWatch	
All Neighbourhood Officers are to take visible ownership of their beat area and work with their communities to identify and reduce demand.	Support of our volunteer CSW Teams in assisting keeping our road network safer by tackling speeding issues.
Priority 5: Reduce Demand through Problem Solving initiatives	
All Neighbourhood & Response Officers are to take visible ownership of their beat area and work with their communities to identify and reduce demand.	How Can I prevent anyone from having to return to this? Identify owners for repeat offenders.

WILTSHIRE POLICE

CPT Area Briefing

Salisbury Area Community Policing Team



Proud to serve and protect our communities

January/February 2020

HIGH LEVEL PCC UPDATES

- **Precept Consultation** – From 6 January, I will be consulting with residents and businesses in Wiltshire and Swindon on what they would be prepared to pay as part of their council tax bill next year's towards local policing. I am still waiting for notification from the Home Office on what our settlement will be in Wiltshire for 2020/21 and hope to be in receipt of this soon. I strongly encourage you to [submit your feedback on my website](#).

HIGH LEVEL FORCE UPDATES

- We continue to implement **changes in our community policing teams** to better meet demand in our different patches. It is a phased approach and as of December the boundaries of our community policing teams changed with their names also changing to reflect the areas covered.

The new list is: Swindon Area CPT, Chippenham Area CPT, Royal Wootton Bassett Area CPT, Trowbridge Area CPT, Warminster Area CPT, Salisbury Area CPT, Devizes Area CPT and Amesbury Area CPT.

- **Changes to 101 system** – In mid-December the options available when members of the public call 101 have changed to allow for to be connected directly to some departments. They will also no longer be taking reports of shoplifting unless it is in progress, an offender is detained or there was violence to any members of the public or staff. Instead callers are encouraged to report the crime online and submit any available CCTV.

GET INVOLVED

- You can keep up to date with the latest news in your area by signing up to our Community Messaging service – www.wiltsmessaging.co.uk

<https://www.wiltshire.police.uk/Followus>

- You can follow your CPT on social media

- More information on your CPT area can be found here: www.wiltshire.police.uk and here www.wiltshire-pcc.gov.uk

WILTSHIRE POLICE

CPT Area Briefing

Salisbury Area Community Policing Team



Proud to serve and protect our communities

January/February 2020

Beat Area Updates

Area Board	Beat Area	PC	PCSO	Community Engagement & What are we Focusing on?
Salisbury	City Centre (ES11)	Jack Billington	Val Brown, Gareth James & Nicola Bird	We will be implementing Operation Vendor, which will build on the success of Operation Hamper and continue to reduce reports of ASB and Shoplifting. We will also be developing a strategy to reduce violent crime relating to the night time economy.
	Bemerton Heath (ES15)	James Barrett	Jo Atkinson	Our focus will be on road safety, particularly speeding vehicles and cycles with no lights. We will also be reviewing the possession and supply of drugs on the beat area.
	St Pauls & Churchfields (ES16)		Matt Murray	We are working on Op Vantor shoplifting offences with the shops on Churchill Way West Retail Park and the new Tesco Express on Wilton Road with some identified repeat offenders.
	Harnham (ES17)		Simon Ward	We will be focusing on addresses that create the most demand, alongside visibility and engagement.
	Friary & Southampton Road (ES12)	Rachel Gunn	Harry Evans & Hannah Cranham	Vulnerability checks in line with closure orders applied to protect addresses at risk of county lines activity and ongoing work in support of Op Vendor.
	Castle Road & Bishopdown (ES14)		Grace Akers	The focus will be on crime prevention work with our churches and ASB issues concerning a couple of addresses where high demand has been identified.
Southern Wiltshire	Old Sarum & Laverstock (EU11 part)	Jenny Moss		School engagement in Laverstock and some wider ASB issues on the Longhedge Estate as the new community integrates.
	Alderbury (EU11 part)	Simon Nash		We are working towards some crime prevention advice to help target harden the area. This will particularly focus on theft and burglary offences.
	Downton & Redlynch (EU12)	John Taylor		Continued partnership work to address specific youth ASB issues. Education regarding catapult offending and speeding motorist.
South West Wilts	Wilton Town & Rural (EW11&12)	Matt Holland	Matt Smith	We will focus on Poaching/hare coursing in the rural areas alongside visibility in the Town. Engagement sessions: Cattle Market-Tues 04 th Feb 0900hrs-1200hrs Wilton Café-Sat 18 th Jan 1000hrs-1030hrs

WILTSHIRE POLICE

CPT Area Briefing

Salisbury Area Community Policing Team



Proud to serve and **protect** our communities

January/February 2020



DORSET & WILTSHIRE FIRE & RESCUE SERVICE

WILTSHIRE AREA BOARD REPORT

South West Wiltshire January 2020

Community Safety Plan

DWFRS Community Safety Plan can be found on the DWFRS website;
<http://www.dwfire.org.uk/community-safety-plan/>

Prevention

We are committed to making a real difference to the lives of people in Dorset and Wiltshire. Our aim is to reduce the level of risk and harm to our communities from fire, targeting those most at risk. We do this primarily through our Safe and Well visits.

A Safe and Well visit is **FREE** and normally lasts about one hour covering topics such as:

- Using electricity safely
- Cooking safely
- Making an escape plan
- What to do if there is a fire
- Keeping children safe
- Good practice – night time routine and other points relevant to you
- Identifying and discussing any further support the occupier may need

Are you or anyone you know:-

- Over the age of 65?
- Need a smoke detector?
- Have a long-term health condition?
- Suffer from poor hearing or sight loss?
- Would you struggle to escape in the event of a fire?

If you can answer yes to more than one of these questions, then please call us on 0800 038 2323 or visit <https://www.dwfire.org.uk/safety/safe-and-well-visits/>



Protection

On-going interaction by Protection Team members with Local Authorities, Private landlords and tenants regarding fire safety-related matters: external cladding systems; fire detection and warning systems; fire resisting doors (& self-closers); combustibility/fire resistance of construction materials; commercial and residential sprinklers systems and water-mist suppression systems

General Enquiries

If you have a general fire safety enquiry regarding commercial property, please email fire.safety@dwfire.org.uk and the Fire Safety Team will respond in office hours.

Fire Safety Complaint

If you wish to tell us about fire safety risks in commercial premises, such as locked or blocked fire exits, you have three options:

- You can email the fire safety department at enforcement@dwfire.org.uk
- Call 01722 69 1717 during office hours (9am-5pm).
- Call our Service Control Centre on 0306 799 0019 out of office hours (5pm-9am)

On Call Recruitment

Fire in Tisbury 6th January 2020.

At 0152 on the morning of 6th January 2020 there was a fire at a house near the fire station in Tisbury. Gladly the fire wasn't too serious, and nobody was injured but the Tisbury crew were not available due to crewing so crews from neighbouring stations attended. All On-Call stations in the area are actively recruiting, details of how to join the Service are listed below.

Have you always wondered if you could join the fire service, but haven't had the opportunity to find out more? Have you found yourself seeking your next challenge, keen to give back to the local community or wanting to learn new skills including leadership and teamwork? Then becoming an on-call firefighter is for you.

As a paid position, on-call firefighters commit anywhere between 40 to 120 hours per week, during which time they must be able to respond to the station immediately.

Many have 'normal' jobs during the day, then upon their return home make themselves available overnight or during the weekends. Some of our crew respond from their workplaces during the day, and we are very grateful to their employers for releasing them to perform their vital duties.

Anyone over 18 years old can apply (although you can also apply once you are 17½) you must be able to respond and attend the fire station within 5-8 minutes, you have a good standard of physical fitness (i.e. you are generally active), and you must have the right to work in the UK.

Further information on becoming an On Call Firefighter can be found at www.dwfire.org.uk/working-for-us/on-call-firefighters/ or should you have any questions, you can call **01722 691444**.



Recent News & Events

Flooding



Over recent years, we have seen more and more properties affected by flooding during periods of significant rain.

Flooding can be caused by rivers and watercourses overflowing; it can also be caused by drains and culverts being unable to cope with excess surface water on the roads.

Everyone whose home is at risk of flooding should have a plan of what to do if the worst happens.

For information regarding any of the below please refer to:-

<https://www.dwfire.org.uk/safety/flooding/>

- Preparing for a flood
- When flooding starts
- Travelling in flooded areas
- After the flood
- Flooding and your electrics

See also:

- Environment Agency – www.environment-agency.gov.uk
- Government web page – [Floods Destroy](#)
- Electrical Safety First – www.electricalsafetyfirst.org.uk



Winter safety



Keeping warm in the winter means using portable heaters, electric blankets or wheatbags – but all of these and the below, carry a fire risk,

- Portable heaters
- Open fires
- Gas fires
- Electric blankets

Please visit <https://www.dwfire.org.uk/safety/safety-at-home/winter-safety/> for further information.

See also:

- The Fire Kills campaign has produced a leaflet on [Fire Safety in the Winter](#).
- There is a wealth of good advice at www.metoffice.gov.uk/barometer/advice

Advice for carers



If you care for a loved one, or work in the care sector, there is much you can do to help keep the person you care for safe. Please visit <https://www.dwfire.org.uk/safety/advice-for-carers/> for various information and advice.



Demand

Total Fire Calls for Tisbury Fire Station for period Dec 1st to Jan 20th:-

Category	Total Incidents
No. of False Alarms	3
No. of Fires	4
No. of Road Traffic Collisions and other Emergencies	8
Total	15

Total Fire Calls for Mere Fire Station for period Dec 1st to Jan 20th:-

Category	Total Incidents
No. of False Alarms	4
No. of Fires	3
No. of Road Traffic Collisions and other Emergencies	4
Total	11

Total Fire Calls for Wilton Fire Station for period Dec 1st to Jan 20th:-

Category	Total Incidents
No. of False Alarms	7
No. of Fires	1
No. of Road Traffic Collisions and other Emergencies	5
Total	13



**DORSET & WILTSHIRE
FIRE AND RESCUE**

Richard Humphrey Station Manager
Email: richard.humphrey@dwfire.org.uk
Mobile: 07850299990

Wiltshire Council Information Item

Subject:	Wiltshire Family and Community Learning
Web contact:	http://www.wiltshire.gov.uk/family-learning

Wiltshire Family and Community Learning includes a range of community-based and outreach learning opportunities designed to help people of different ages and backgrounds to :

- Gain a new skill
- Reconnect with learning
- Prepare to progress to formal courses
- Learn how to support their children better

Our vision and strategy supports national, regional and Council objectives to create stronger, more resilient communities, supporting adults back into work and helping parents to support their children's life chances by:

- Delivering programmes in identified high priority areas of need, to targeted parents and carers of young children.
- Offering learners long term, planned programmes with clear progression pathways.
- Improving the attainment of adults and children as a result of families taking part in intergenerational learning activities.

Courses are funded by the Education and Skills Funding Agency. Learners must be 19+, have been resident in UK/EU for three or more years, have less than five GCSEs grades A-C and/or be a service family and/or in receipt of benefits

Please call us on 01225 770478 to find out more about our service.

Email: familyandcommunitylearning@wiltshire.gov.uk

Wiltshire Council Information Item

Subject:	Flood Resilience in Your Local Area
Web contact:	renate.malton@wiltshire.gov.uk

The recent wet weather may lead to communities asking about their flood risk.

Communities may be interested in holding a workshop to enable any towns and parishes within your area the opportunity to sit down and work through drafting up a flood plan for their community along with a colleague from the Environment Agency. Drawing up a flood plan can be daunting for a parish on its own but doing this with other like-minded parishes will help.

Communities can find out if they are at risk of flooding through the attached environment agency link: <https://www.gov.uk/check-flood-risk>

We would be looking to do this from January 2020. The best days to arrange these are Tuesdays & Wednesday – am/pm and evenings.

For more information please contact Renate Malton, Flood Resilience Officer renate.malton@wiltshire.gov.uk

Wiltshire Council Information Item

Subject:	Motiv8 Children's and Young People's Service
Web contact:	https://www.dhi-online.org.uk/get-help/young-peoples-drug-alcohol-services/motiv8

Our objectives are to engage with young people's groups and in turn promote the availability of the service for young people.

About the service:

Motiv8 provide support services in Wiltshire for children and young people, up to their 18th birthday, with problematic substance use, and for children, young people and families affected by parental substance use. Its primary objective is to improve the health, welfare and life chances of those vulnerable to, or experiencing, substance misuse.

Motiv8 provide advice, guidance and one-to-one sessions for young people who are having problems with drugs and/or alcohol. The service is free and confidential, and aim to provide a flexible and non-judgemental space for young people to be open about the problems they are facing.

How we help:

Motiv8 sees young people in and around Wiltshire, in their communities; at schools, colleges and home visits.

Our services include:

- Brief interventions
- Crime Prevention - community resolutions
- Individual sessions
- Outreach
- Groupwork
- Harm reduction information and advice
- Signposting to other services
- Workshops and training for professionals
- Workshops and training for young people

Motiv8 Team Manager:

Natalie Huggins

Please contact should you require any further information about the service.

Phone

0800 1696136

Email

info@dhimotiv8.org.uk

Instagram

dhimotiv8

Wiltshire Council Information Item

Subject:	Community Area Joint Strategic Needs Assessment (JSNA)
Web contact:	https://www.wiltshireintelligence.org.uk/community-area/

Background

The Community Area Joint Strategic Needs Assessment (JSNA) works to collaboratively set local area priorities, by combining service led data with local insight and opinion. This acts as a catalyst for community led action that helps meet local need and supports the delivery of the Wiltshire Council Business Plan. Through working with the area boards, Wiltshire Council is able to encourage and support communities to take action to sustainably meet their needs.

Aims of the JSNA

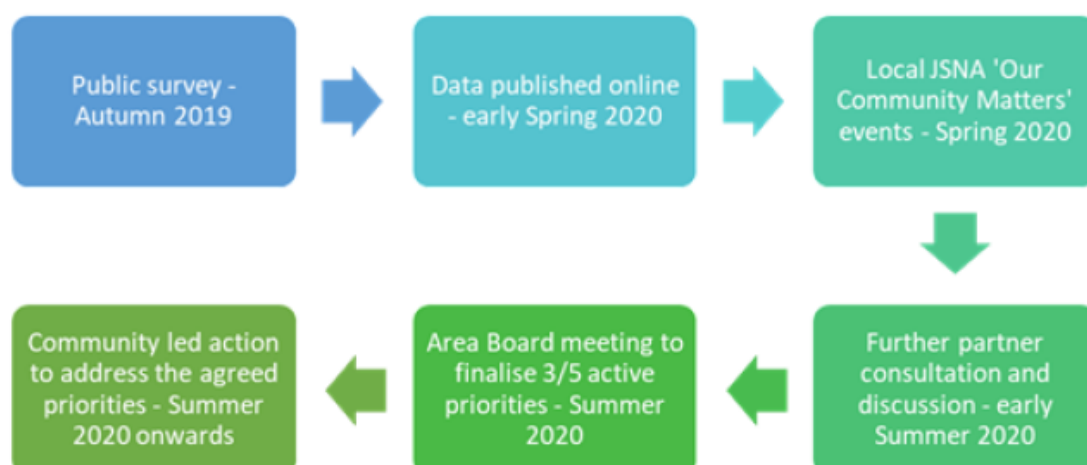
- To collaboratively set our local priorities for each community area by combining our service led data with local insight and opinion
- To facilitate community led action that addresses local priorities and supports the Wiltshire Council Business Plan.

2020 Delivery plan

The JSNA is refreshed every three years, with the next cycle due to be updated in 2020. There will be three key engagement stages to support the area board in hearing from their communities and identifying their active local priorities:

- Public JSNA survey (completed in Autumn 2019)
- A JSNA event (scheduled for Spring 2020)
- A resident and partner engagement exercise (scheduled for early summer 2020)

The flowchart shows the key milestones of the JSNA process with a more detailed description of the process below.



Wiltshire Council Information Item

Public survey – Autumn 2019

A public survey was delivered across the communities and 6,300 responses were received. Excel spreadsheets with the survey data are now available and full results from this survey will be published in due course at <https://www.wiltshireintelligence.org.uk/community-area/>

Data published online – early Spring 2020

Public Health analysts will work collaboratively across Wiltshire Council departments, partners and local services to collect and analyse data.

JSNA ‘Our Community Matters’ events – Spring 2020

The purpose of each event will be to bring together local people to share the results of the public survey, highlight the findings from the service data and discuss and set the local priorities. Each event will be used to identify the area’s top 12 priorities across the nine thematic areas:

- Arts, culture and leisure
- Children and young people
- Community safety
- Economy and employment
- Environment
- Health and wellbeing
- Highways and transport
- Housing
- Older people

Partner and resident engagement – early Summer 2020

Following this meeting, further local conversations will take place with residents and partners. The engagement aims to establish partner and community capacity, resource and preference for the priorities that have been identified.

January 2020

The right healthcare, for you, with you, near you

NHS Wiltshire Clinical Commissioning Group (CCG) is responsible for commissioning a broad range of healthcare for the population of Wiltshire. We are led by experienced local GPs drawn from across the county, who provide clear clinical leadership to the big decisions affecting the future of healthcare provision in Wiltshire, carefully tailored to meet the differing needs of people locally.

Our vision is to ensure the provision of a health service which is high quality, effective, clinically-led and local. We are committed to delivering healthcare that meets the needs of Wiltshire people, to consult and engage with our population to enable them to be involved in decisions made about health services and to deliver those services to people in their own homes or as close to home as possible.

News

New Independent Chair appointed to lead Bath and North East Somerset, Swindon and Wiltshire health and care system

Health and care leaders from Bath and North East Somerset, Swindon and Wiltshire (BSW) have appointed a new Independent Chair.

Stephanie Elsy, a Non-Executive Director at Solent Community and Mental Health Trust and former Leader of Southwark Council in London, joins the BaNES, Swindon and Wiltshire Sustainability and Transformation Partnership (STP) from 9 December 2019.

She will provide independent leadership and work to oversee the ongoing improvement and integration of health and care services across the region.

She will also help to deliver the ambitions set out in BaNES, Swindon and Wiltshire's Five Year Plan – which will be published early next year – and provide support to the partnership as it develops into an Integrated Care System (ICS) by April 2021.

New Director of Community and Joint Commissioning

We are pleased to welcome Clare O'Farrell who has joined us as Interim Director of Community and Joint Commissioning. Clare has taken up this role to replace Ted Wilson who is currently acting Chief Operating Officer for Wiltshire.

Clare has had a 29 year career in variety of senior leadership roles in the NHS including senior operational management roles in acute hospital services in Wales and in the South West. She was the management lead for the establishment of the original Avon and Somerset Cancer Services Network and has previously worked in a commissioning role locally.

Since 2007 she has worked in senior roles at the Royal United Hospital where she has delivered strategic projects in partnership with NHS and with local people; this included a year supporting the successful bid for Wiltshire Community Services tender and most recently the acquisition of the RNHRD services which encompassed large scale public consultation and the successful transfer of patient services to new accommodation on the RUH site.

Reminder - Transforming Maternity Services Together decision on proposal this month

Follow extensive consultation, a final set of recommendations to change the way maternity services are delivered in B&NES, Swindon and Wiltshire will be submitted to a joint meeting of the BaNES, Swindon and Wiltshire Clinical Commissioning Groups Governing Body on Thursday 16 January 2020.

This meeting will be in public and will take place at the Lackham Campus, Wiltshire College from 10am – 12 noon. If you have any queries, please email us at maternity.transformationBSW@nhs.net

You can still find information on the proposals on the [Transforming Maternity Services Together website](#).

BSW CCG online

As we head towards the merger with Bath and North East Somerset CCG and Swindon CCG in April 2020, we are consolidating our online presence.

Our Twitter accounts have already merged – you can follow us @NHSBSWCCG

We are working on our Facebook accounts – the new address will be @NHSBSWCCG

And by 1 April 2020 we will have a new website in place – more information to follow.

Governing Body meeting

Our next Wiltshire CCG Governing Body meeting will be Thursday 23 January 2020 at 2pm at Southgate House, Pans Lane, Devizes.

The next BaNES, Swindon and Wiltshire (BSW) Governing Bodies in common meeting is on Thursday 16 January 2020 at Lackham Campus, Wiltshire College from 10am – 12 noon.

You can read the papers from previous meetings on our website www.wiltshireccg.nhs.uk/governance/governing-body-meetings-in-public

News archive

Read more news from Wiltshire CCG in our [news archive](http://www.wiltshireccg.nhs.uk/news/news-archive) – www.wiltshireccg.nhs.uk/news/news-archive.

Keep up to date with news and information from Wiltshire CCG on social media.



NHS Wiltshire CCG



@NHSBSWCCG

Applications open for new Board Co-ordinator role



Board members
Andy Mintram,
Irene Kohler,
Rob Jefferson
(Chair), Hazel
Dunnett
and Emma
Leatherbarrow

We are looking for a Board Co-ordinator who can liaise with and co-ordinate our Local Leadership Board, including working with the chair and manager to prepare the agenda and papers for meetings, take notes and share these with all members of the Board.

Our Local Leadership Board is the driving force behind our commitment to ensure the voices of children, young people and adults are heard by those who run, plan and regulate health and social care services in the county.

Its members are from a variety of backgrounds, including the NHS and education, and their role is to help us prioritise the health and social care issues that are most important to the people of Wiltshire.

The Board Co-ordinator role is for 10 hours a month and applicants will need to have experience in minute taking. The closing date is 26 January 2020. Find out more at: www.helpandcare.org.uk/work-with-us/vacancies

Find out more about our Board at:
www.healthwatchwiltshire.co.uk/our-board

Keep in touch

Stay up to date with what we're doing and where we're going by signing up to our news alerts.

Simply complete the form at the bottom of the homepage on our website to receive the latest updates straight to your inbox.

Find out where we'll be heading at www.healthwatchwiltshire.co.uk/events

And follow us on social media:



South West Wiltshire Community Safety Group Record

Wiltshire Council may record its meetings for live and/or subsequent broadcast on the Council's website at <http://www.wiltshire.public-i.tv>. At the start of the meeting, the Chairman will confirm if all or part of the meeting is being recorded. The images and sound recordings may also be used for training purposes within the Council.

By entering the meeting room you are consenting to being recorded and to the use of those images and recordings for broadcasting and/or training purposes.

The meeting may also be recorded by the press or members of the public.

The Chairman referred to this standard announcement at the start of the meeting, and all present agreed to its sentiment.

Area	South West Wiltshire				
Date	15/01/2020	Times	6 – 8.00pm	Venue	Nadder Centre, Tisbury
Present	<p>Cllr George Jeans (Chair, Wiltshire Councillor), Nigel Cooke (Swallowcliffe PC), Karen Linaker (Wiltshire Council), Clare Churchill (Berwick St John, Burcombe, Dinton, Donhead St Mary, Fovant, Quidhampton), Mike Davidson (Wiltshire Neighbourhood Watch Association), Frank Freeman (Hindon PC), Cllr Jose Green (Wiltshire Councillor), PC Matt Holland (Wiltshire Police), Mary Barlow (Tisbury resident), Wendy Blake (Tisbury resident), David Childs (Sutton Mandeville PC), Jane Mayhew (Burcombe PC), Anna Southern (Dinton PC)</p> <p>Apologies received from Roy Sims (Mere PC), Rodger Fooks (Community Speedwatch Officer) and Police Officer - Richard Salter</p>				

Decisions/Actions from this meeting:

- a) Ask the South West Wiltshire Area Board to consider formulating a recommendation requesting the reinstatement of speed cameras in South West Wiltshire, and forwarding the same request to the two MPs
- b) Karen and Mike to liaise over improving communications between neighbourhood watch co-ordinators / volunteers and this community safety group
- c) Karen to liaise with Mike to set up some drop in support and training sessions in Mere and Wilton and a repeat session in Tisbury

Actions completed since last meeting in 2019 :

- a. Matthew Stops – Dorset & Wiltshire Fire & Rescue Service representative has been confirmed for the South West Wiltshire Area. Karen to liaise with him and invite him to future meetings.
- b. Matt Holland confirmed that a range of speed awareness courses are offered in the county, as queried at the last meeting, including a motorbike safety and motorway safety course

1.

Speeding Issues

- (a) The group considered a request originally submitted by the Tollard Royal parish representatives regarding a recent news article reporting that Wiltshire had only recorded 807 speeding offences in 2018/19 on speed cameras, compared to the next lowest recording county (Cleveland 11,937). The group raised a number of queries and concerns regarding this and concluded that subject to more investigations being carried out, representations should be made to the local MPs and to the Wiltshire & Swindon Police and Crime Commissioner via the Area Board requesting speed cameras to be reinstated in the county.
- (b) Regarding community speed watch (CSW), Matt Holland reiterated that local police teams remained committed to supporting community speed watch and the various teams of volunteers across the community area. The group nonetheless repeated concerns raised previously that volunteers would prefer to see more support and more police presence at speeding hotspots. Parish representatives also raised concerns about the recent lack of responsiveness from officers responsible for the CSW scheme.
- (c) Hindon parish council repeated its request for the issue of neighbouring counties not collaborating with Wiltshire or following up and penalising speeders who are recorded speeding by CSW, but not then written to and pursued by the police force in the neighbouring county where they live
- (d) Matt Holland alerted the group to the new traffic powers held by the police which is helping to bring down vehicle crime: power to seize vehicles with no tax or insurance
- (e) The group discussed the recently re-issued SID protocol and noted that an update was still outstanding from Cllr Bridget Wayman regarding whether or not training was required to accompany the protocol.

2.	<p><u>Drug & Alcohol Misuse</u></p> <p>Karen explained that following the area board themed meeting back in mid 2019 regarding drug and alcohol misuse in the community area, teams continued to work together, especially regarding the county lines strategy, but that more was needed to in particular to bring about interventions through the collaboration of community teams (parish council, sports development officers, housing officers, schools etc).</p>
3.	<p><u>Service/Partner Updates</u></p> <p>Matt Holland provided the following further updates and responses to questions raised at the meeting</p> <ul style="list-style-type: none"> • a newly revised and strengthened neighbourhood policing structure had been agreed and would be detailed in the January 2020 reports to area boards and parish councils • current policing priorities are rural crime, including hare coursing, and community speedwatch • he would follow up with the Tisbury police team regarding concerns raised by local residents following a recent spate of burglaries in the village • clarified that if Tisbury wanted to put up CCTV in the village, this would be a scheme that would require finding and instigation by the parish council in the first instance. He mentioned that Warminster had recently set up CCTV, and that Tisbury PC might want to enquire with them as to what is involved • Matt also explained how residents and businesses can set up their own CCTV • Matt repeated the correct ways in which the police would prefer people to report crime – i.e. using 999 or 101, or in non urgent situations, Crime Stoppers as an alternative
	<p>Mike Davidson provided an update on behalf of the Wiltshire Neighbourhood Watch Association</p> <ol style="list-style-type: none"> a) In reviewing what NHW co-ordinators remain active – there are 11 currently active in Tisbury. b) According to research, NHW signs reduce crime by 11% c) Mike will look to arrange more NHW events across the area to help recruit new co-ordinators and to continue to raise the profile of the scheme

4.

AOB

- (a) Hindon representative thanked police for recent quick response to apparent security threat from drones
- (b) Mere is having problems with inconsiderate parking of large vehicles in narrow highways which cause real obstructions and highway safety risks
- (c) Karen to ensure future CSG meetings are notified well in advance to the group contact list and the parish councils and posters displayed to ensure the wider public are aware of the meeting

Update from the Local Youth Network Meeting (16 Jan 2020)

Attending: Jaki, Mark, Bridget, Karen, Tony, Anne, Sophie, Cam, Archie, Hayley, Miranda

Apologies: Duncan, Leon, Hanna, Lauren, Jack, Ben

1. Karen asked all to attend and support the Employment and Skills event: 18th March, 2.30pm – 5.30pm at the Nadder Centre
 - Aimed at Young People.
 - Run by Wiltshire Council.
 - Jaki suggests to promote it to students at risk of becoming/ are NEET at Shaftesbury and Gillingham.
 - Suggestion to offer Tisbus as transport.
2. Budget Update:
 - Youth: £6400.
3. Real Madrid Event at Nadder Centre – Area Board Proposed Funding Scheme
 - Parishes invited to nominate 1 person to fund for the event.
 - The event is for 7-16 ages, and the young people would support area board funding to go to 13-16s in the main, but could accept a recommendation of the funding being eligible for 7-16s, on the basis that 50% of the funding was earmarked for 13-16s
 - Noted that the board would be requested to earmark £4000.
4. Schools' Engagement scheme
 - Aim: to engage primary schools and other YP with art workshops.
 - Area Board project already with secured funding will proceed in the next 6 months for a limited number of schools and young people.
 - Area Board will be asked to earmark additional funding to extend the offer of this scheme to all schools and more young people over the coming 18 months – 2 years

5. 29th Jan: Young People Mental Health themed Area Board Meeting

- Mark asked if Young Carers will be involved and whether their mental health is directly tied into this or whether it's dealt with separately. Karen explained that young carers can be part of the scope, although any specific outcomes benefiting young carers would need to be considered following the meeting. The theme is to cover all young people, whether with our without caring responsibilities
- Karen brought questions for youth panel to consider and asked the LYN young people present to choose which question they would be prepared to respond to as part of the panel on the 29th Jan
- Concerns raised over cost of counselling and CAMHS referral and waiting lists.
- Promotion of mental health first aid course considered to be beneficial
- Member of staff is required for S4S mentoring programme.

Actions: Archie & Miranda to answer Qs as part of the special panel on the 29th Jan. Miranda to send Qs to Lauren.

Date of Next Meeting: 27th Feb, Fovant Youth Club, 6:30pm.

Report to	South West Wiltshire Area Board
Date of Meeting	29/01/2020
Title of Report	Community Area Grant funding

Purpose of the report:

To consider the applications for funding listed below

Applicant	Amount requested
Applicant: Ebbesbourne Wake Parish Council Project Title: Replace Fingerpost View full application	£400.00
Applicant: Barford St Martin Village Defibrillator Fundraising Activities Group Project Title: Barford St Martin Defibrillator Fundraising View full application	£1464.20
Applicant: Able Hands Together CIC Project Title: Able Hands Together CIC View full application	£5000.00
Applicant: East Knoyle Village Hall Project Title: East Knoyle village hall - Upgrade of Toilet facilities including new Disabled toilet. View full application	£5000.00
Applicant: Teffont Parish Council Project Title: Village Finger Post Restoration View full application	£145.00

1. Background

Area Boards have authority to approve Area Grants under powers delegated to them. Under the Scheme of Delegation Area Boards must adhere to the [Area Board Grants Guidance](#)

[The funding criteria and application forms](#) are available on the council's website.

2. Main Considerations

2.1. Councillors will need to be satisfied that funding awarded in the 2019/2020 year is made to projects that can realistically proceed within a year of it being awarded.

2.2. Councillors must ensure that the distribution of funding is in accordance with the Scheme of Delegation to Area Boards.

2.3. Councillors will need to be satisfied that the applications meet the Community Area Board grants criteria.

3. Environmental & Community Implications

Grant Funding will contribute to the continuance and/or improvement of cultural, social and community activity and wellbeing in the community area, the extent of which will be dependent upon the individual project.

4. Financial Implications

Financial provision had been made to cover this expenditure.

5. Legal Implications

There are no specific legal implications related to this report.

6. Human Resources Implications

There are no specific human resources implications related to this report.

7. Equality and Inclusion Implications

Community Area Boards must fully consider the equality impacts of their decisions in order to meet the Council's Public Sector Equality Duty.

Community Area Grants will give local community and voluntary groups, Town and Parish Council's equal opportunity to receive funding towards community based projects and schemes, where they meet the funding criteria.

8. Safeguarding Implications

The Area Board has ensured that the necessary policies and procedures are in place to safeguard children, young people and vulnerable adults.

9. Applications for consideration

Application ID	Applicant	Project Proposal	Requested
3524	Ebbesbourne Wake Parish Council	Replace Fingerpost	£400.00
Project Description: The fingerpost on the road between Ebbesbourne Wake and Fifield Bavant has been missing an arm signed to Bowerchalke, Woodyates and Sixpenny Handley for some time. There is also a misspelling on one of the existing arms - currently Shaftsbury which of course should be Shaftesbury.			

Input from Community Engagement Manager:

The area board has £1565 remaining in its available earmarked Finger Post budget.

Proposal

That the Area Board determines the application.

Application ID	Applicant	Project Proposal	Requested
3525	Barford St Martin Village Defibrillator Fundraising Activities Group	Barford St Martin Defibrillator Fundraising	£1464.20

Project Description:

Unlike many neighbouring villages Barford St Martin does not possess a Defibrillator and more disturbingly the nearest Defibrillator is located 4 miles away. At a Village Open Meeting convened in March this year it was unanimously decided to commence fundraising to procure 3 Public Access Defibrillators PAD one each to be located to cover the east and west extremities of the Village with another to be located to cover an isolated outlying mobile home park Heath Farm Park.

Input from Community Engagement Manager:

This application is eligible for funding from the community area grants budget.

Proposal

That the Area Board determines the application.

Application ID	Applicant	Project Proposal	Requested
3529	Able Hands Together (AHT) CIC	Able Hands Together CIC	£5000.00

Project Description:

AHT is a not for profit Community Interest Company (CIC) that offers days activities for adults who have a learning difficulty and is also an alternative education provider registered with Wiltshire council. It teaches basic animal management horticulture and life skills to student ages 18 plus.

Input from Community Engagement Manager:

The project is to convert a barn so that it can be used for day activities for people with a learning disability. There is match funding available and the project meets our grants criteria. The project is relocating from Laverstock to Stoford and the applicant understands that a new bus stop is likely to be installed soon which will benefit the project, but in the meantime, the majority of clients will travel by taxis, and AHT will also provide a shuttle bus from the Swan Pub.

We are also waiting information regarding the financial accounts and regarding the number of estimated and actual beneficiaries which are drawn from villages in the South West Wiltshire Community Area. Around 50 beneficiaries are drawn from

the nearby military community, 75 volunteers are engaged in the project – 30 of whom work with schools to organise school visits. The project provides 150 employment opportunities for people with ASD and a wide range of local organisations contract with the project, including Wiltshire Council SEND and adult social care services, Alabare, and Wiltshire Centre for Independent Living.

The Amesbury Area Board has approved £5k towards the project, subject to receiving satisfactory documentation regarding AHT’s business plan, planning permission, evidence of ownership of the land, buildings or lease on the land and buildings. At the time of writing, the business plan has been received, but we are still waiting for information regarding South Newton and Stoford Parish Council’s support for the project, the planning permission/lease clarifications and some clearer information that residents living in the South West Wiltshire CA already/will benefit.

Proposal

That the Area Board determines the application.

Application ID	Applicant	Project Proposal	Requested
3513	East Knoyle Village Hall	East Knoyle village hall - Upgrade of Toilet facilities including new Disabled toilet.	£5000.00

Project Description:

The toilets for our village hall are exceptionally dated and in urgent need of upgrade to modern easily managed and cleaned facilities. There are currently no disabled facilities and we have through redesigning the areas been able to plan for the installation of a regulation disabled toilet facility. Ensuring the hall is fully compliant with current requirements.

Input from Community Engagement Manager:

East Knoyle Village Hall has not benefited from area board funding in the past. The application meets the grant criteria and the area board’s contribution would benefit a well used community facility.

Proposal

That the Area Board determines the application.

Application ID	Applicant	Project Proposal	Requested
3616	Teffont Parish Council	Village Finger Post Restoration	£145.00

Project Description:

The three fingers on the post are in serious decay and in imminent danger of falling off. The fingers will be replaced and painted in weathershield paint. The letters are salvageable. New fixings will be required to restore the post.

Input from Community Engagement Manager:

There is sufficient funding remaining in the area board's earmarked finger post budget fund.

Proposal

That the Area Board determines the application.

No unpublished documents have been relied upon in the preparation of this report

Report Author: Karen Linaker, Community Engagement Manager, 01722 434697
karen.linaker@wiltshire.gov.uk

